

CAPABILITY OVERVIEW

Gen-Clarity™
Understanding
your impacts on
tomorrow, today

Presenting Gen-Clarity™, a comprehensive suite of tools to provide clear insights into how business decisions impact your sustainability journey.

We have combined our technical advisory and engineering capabilities to develop this ESG and sustainability toolbox. Gen-Clarity™ helps you navigate complex regulatory landscapes, utilising bespoke technology and strategic partnerships.

Gen-Clarity™, Understanding Your Impacts On Tomorrow, Today

WHAT IS GEN-CLARITY™

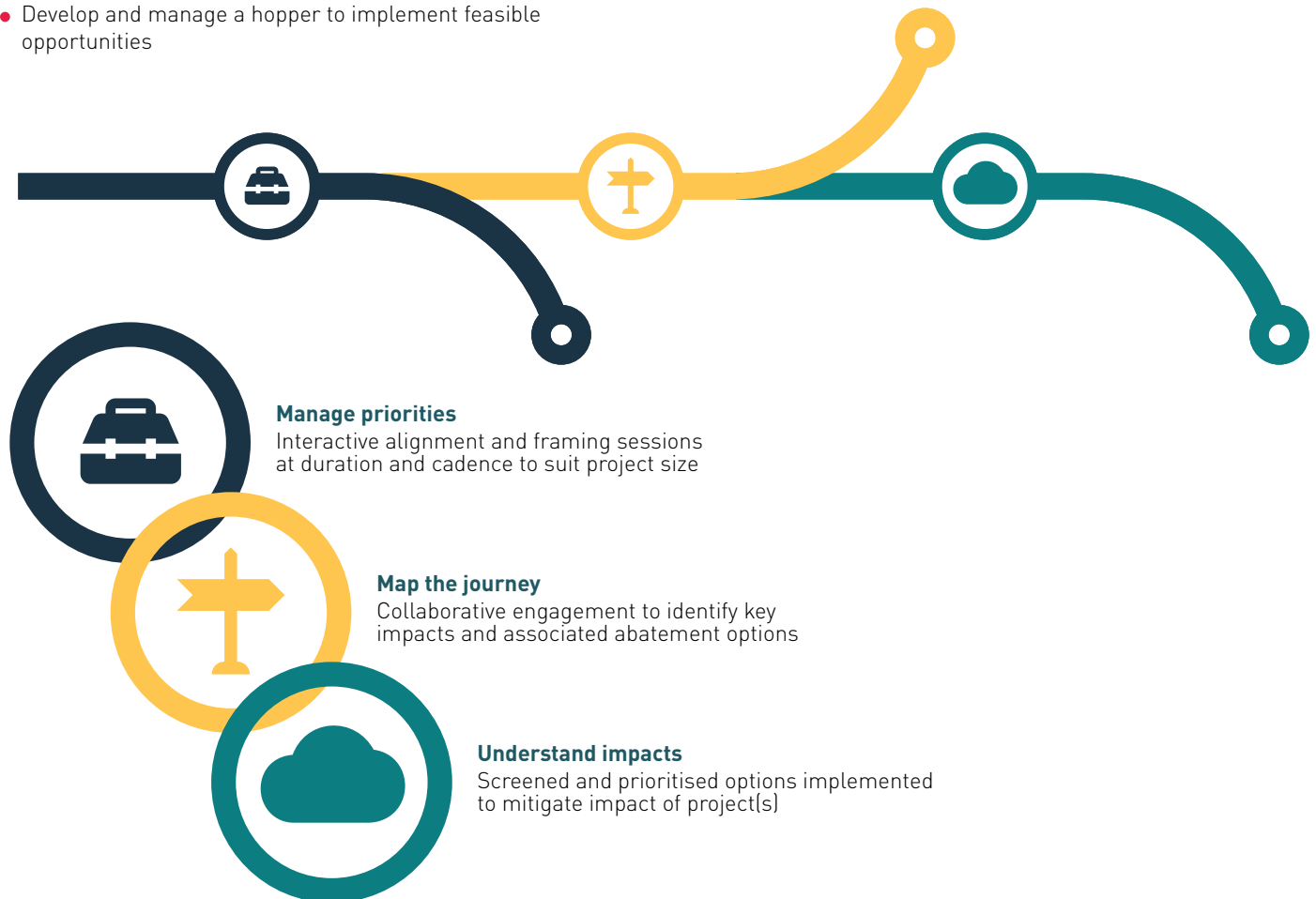
Gen-Clarity™ brings together our sustainability and ESG (Environmental, Social and Governance) skills and expertise into one place, providing a robust approach to managing impacts.

The suite of tools allows our clients to:

- Identify sustainability/ESG related impacts of a project or a product
- Establish a catalogue of abatement options and screen against predefined decisions and ranking criteria
- Develop and manage a hopper to implement feasible opportunities

BRINGING CLARITY TO DECISION-MAKING

ESG and sustainability performance are driven by diverse stakeholder needs. Our unique blend of strategy consulting and technical engineering allows us to leverage technology and strategic partnerships to tailor support to our clients. Our standardised approach can be applied across differing regulatory landscapes, providing our clients with clear insights into how business decisions impact their sustainability journey.



Gen-Clarity™ is applicable to all sectors and industries at all phases of the lifecycle.

Gen-Clarity™, Understanding Your Impacts On Tomorrow, Today

GEN-CLARITY™ FEATURES



Established methodologies

We employ well-established methodologies, such as our Impact Reduction Framework, to systematically identify and implement strategies that reduce environmental impact.

Trusted calculations

We utilise in-house carbon assessment tools, CEE&C (Carbon Energy Environmental and Cost Model), and LCA (Life Cycle Assessment) Product Carbon Certification to deliver accurate and reliable calculations of carbon emissions and environmental impacts.

Web-based tools

We offer user-friendly web-based tools to easily track and manage carbon footprints. These tools provide real-time data and insights, facilitating informed decision-making and proactive environmental management.

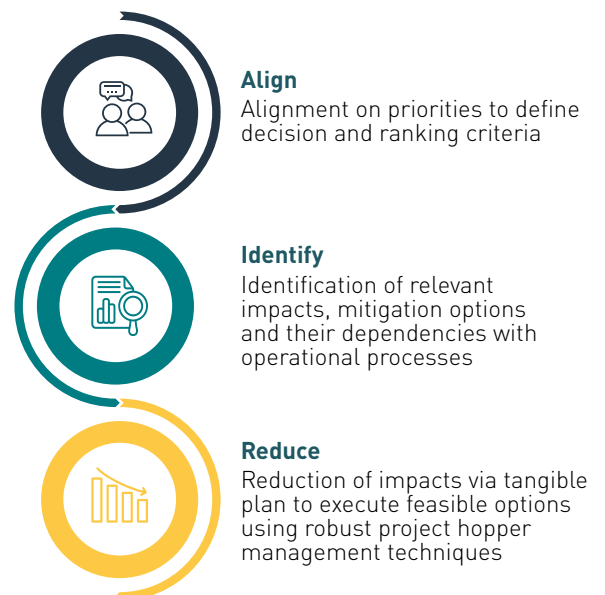
Alliances and partnerships

We have strategic alliances and partnerships, including with the Open Group's Standard Data Platform. These collaborations allow us to integrate high-quality data and best practices into our processes.

Adherence and knowledge of international standards, protocols and guidance

Our team is well-versed in international standards, protocols and guidance such as the ISO 14000 family of standards for environmental management and the Greenhouse Gas Protocol. Our methodologies and calculations align with globally recognised best practices, providing credibility and reliability to our clients.

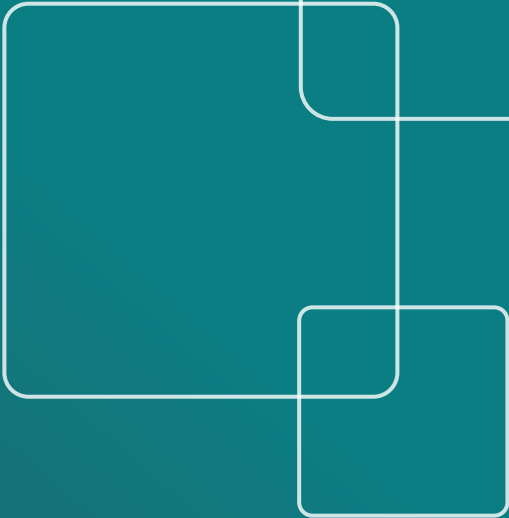
OUR IMPACT REDUCTION FRAMEWORK



CONTACT US

Inquiries regarding our Gen-Clarity™ services can be sent to:

enquiries@genesisenergies.com



Your trusted **advisor** on the journey
to a **sustainable future**

